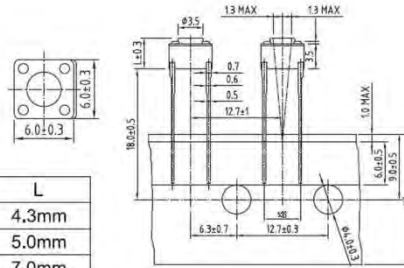


SWTA6604HX-130L/160L/250L



1. Rating : DC 12V, 50mA
2. Travel : 0.25±0.1m/m
3. Operating Force : 130 or 160 ±30gf
or 250 ±50gf
4. Contact Resistance : 50m Ω MAX
5. Life : 100,000 Cycles

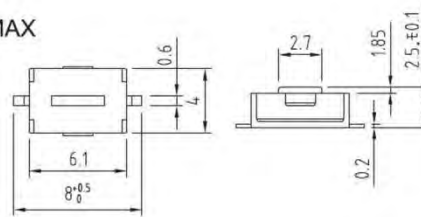


Part No:	L
SWTA6604H	4.3mm
SWTA6604HA	5.0mm
SWTA6604HB	7.0mm

SWTA6607S-180L



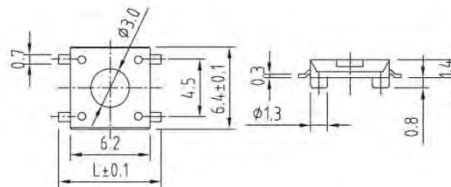
1. OPERATION FORCE: 180±50gf
2. TRAVEL: 0.25±0.2/-0.1mm
3. CONTACT RESISTANCE: 100mm MAX
4. GENERAL TOLERANCE: ±0.3



SWTA6617X-160L/250L



1. Rating : DC 12V, 50mA
2. Travel : 0.25±0.1m/m
3. Operating Force : 160 ±30gf
or 250 ±50gf
4. Life : 100,000 Cycles Min

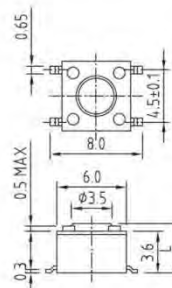


Part No:	L
SWTA6617	8.0mm
SWTA6617A	10.0mm

SWTA6647NX-130L/160L/250L



1. Rating : DC 12V, 50mA
2. Travel : 0.25±0.1m/m
3. Operating Force : 130 or 160 ±30gf
or 250 ±50gf
4. Contact Resistance: 50m Ω MAX
5. Life : 100,000 Cycles Min



Part No:	L
SWTA6647N	4.3mm
SWTA6647NA	5.0mm
SWTA6647NB	7.0mm
SWTA6647NC	8.0mm
SWTA6647ND	9.5mm
SWTA6647NE	7.3mm
SWTA6647NF	12.5mm
SWTA6647NG	13.5mm

